



SARA

PLAT^AFORM

that relies on its own intelligent dispenser is able to control treatments and unite in real time the doctor, pharmacist, caregiver and patient.

WHO estimates that 50 % of patients with chronic diseases do not adequately comply with prescribed treatment. Lack of Adherence to treatments, mainly in chronic and polymedicated patients, has significant clinic, economic and social-health implications. This is an expense to the **National Health system of about 11.25 billion euros per year and 18.400 deaths related to this cause.** Source: according to data handled by the Spanish Hospital Pharmacy Health (SGFM) 2014.

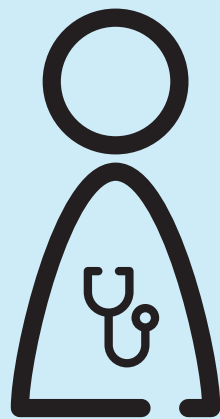
This is where  is born,

a **PLAT[^]FORM**

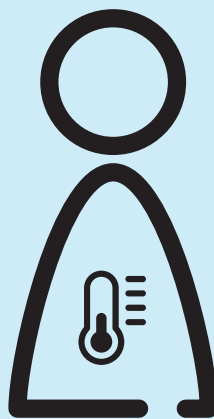
that relies on its own intelligent dispenser, is able to control the treatment and unite in real time the doctor, pharmacist, caregiver and patient, for a higher quality and life expectancy.

PLAT[^]FORM
TREAT[^]MENT
DISPENSER

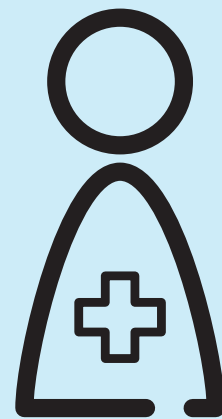
PLAT^AFORM



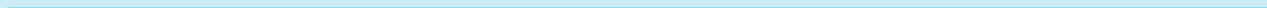
Doctor



Nurse
Patient
Caregiver



Pharmacist





INTERACTION BETWEEN USERS

By creating communication between doctor, pharmacist and caregiver, any symptoms of the patient can be acted and prevented more quickly.



REAL TIME TRACKING

As the dispenser is constantly connected to the platform sending information all the times, the SARA platform is able to create a database of all the patient information that the doctor will be able to access to evaluate the treatment and to make modifications directly to the dispenser, without the need for the patient to go through consultation.

Keeping track of treatment from the same home reduces consultations, hospital beds and the likelihood of infections in case of pandemic (COVID-19). It also lowers the mortality rate with the economic savings that this entails for the state.



STATISTICS

Taking into account the characteristics and treatments of the different patients, that can be studied to assess the most effective treatment in each pathology.



ARTIFICIAL INTELLIGENCE

Over time it will gain great experience in treatments and their interactions thanks to Big Data, so the platform will be able to warn and advise the doctor of the treatment to follow.



GLOBAL USE

Knowing the location and symptomatology of each patient, the focus of a virus can be located and prevented instantly. The authorities could act to prevent infections and not spread as it happened with COVID-19, thus saving a greater number of lives.

TREATMENT

- 1 DOCTOR.** It discharges the patient on the SARA platform as well as the treatment for the same.
 - 2 PHARMACIST.** The patient goes to the pharmacist and the pharmacist enters the platform to know the treatment of the patient and prepare the dispenser with the necessary medicine.
 - 3 PATIENT.** The dispenser is taken to your home, and through the SARA app that you will have installed on your mobile, it will notify you to take the medicine, go to the pharmacy to recharge and even when the next consultation is. In case of any abnormalities in the treatment, you will notify through the platform the doctor, pharmacist and caregiver if you have it. On the other hand, the APP can be synchronized with other bluetooth devices (Blood pressure monitor, heart rate monitor, thermometer and scale) to gather more information about the treatment to which it will add value.
 - 4 BACK TO THE OFFICE.** The doctor will access the platform to see how the patient has carried the treatment and to assess the effectiveness of it.
-

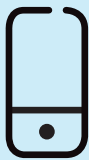


CONNECTIVITY

To improve adherence, the coordinated interaction of all healthcare professionals involved in patient care is key, for this the platform has a space where they can communicate in order to offer the best service to their patients.



COMPUTER
DOCTOR
AND PHARMACIST



APP
PATIENT AND
CAREGIVER



DISPENSER

DISPENSER



Complementary accessories

HEART RATE MONITOR, THERMOMETER,
BLOOD PRESSURE MONITOR
AND BIOIMPEDANCE SCALE.





ONLY MANULABLE BY THE PHARMACIST

It is hermetic and can only be unlocked by the pharmacist, in this way we ensure that the patient does not self-medicate, correctly follow the treatment and do not store drugs in the pantry of their home, thus getting them to follow the treatment correctly and the savings in drugs that this implies for the state.



INTERFACE

It is very simple and adapted to different types of disabilities so that the patient can easily interact with it and not be afraid of possible misuse of it.

FUNCTIONS



Chrono pharmacology



Up to 2 users



Machine Learning



SOS system



Capacity up to 280 tablets



96 h autonomy



Transportable



Temperature and humidity control



Spot shots



SARA

PLAT^AFORM